

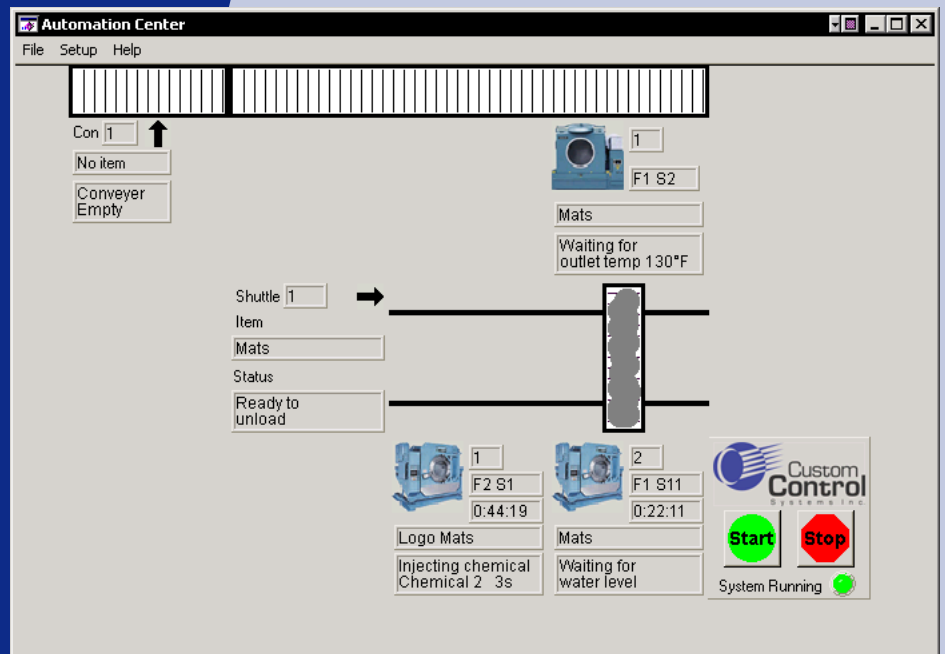
Historically,
industrial laundries
are labor-intensive,
high-stress operations.

**Custom Control
Systems**

has changed that.

For more information:
Custom Control Systems Inc.
2007 Beech Grove Place
Utica, NY 13501
315.732.1990
Fax 315.732.1666

www.customcontrolsystems.com



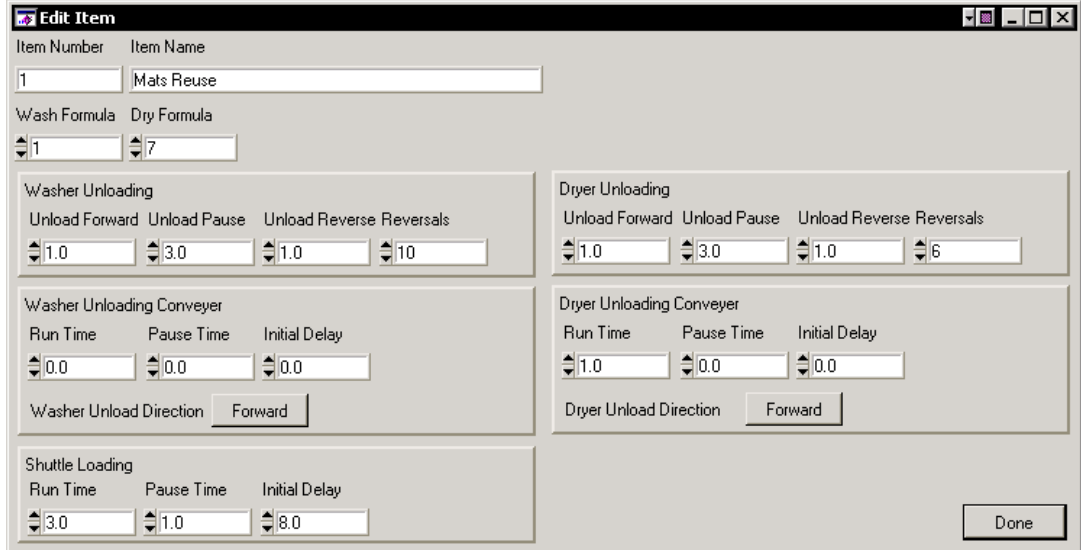
AUTOMATION CENTER FEATURES

1. Provides a graphical display of the conveyers, shuttles, washers and dryers in the plant.
2. Each machine has a status block, which shows important information like formula status, error messages, and formula run time remaining.
3. Individual item setup allows each item to have its own jog times for unloading from the washers and dryers, as well as separate indexing times for conveyers and shuttles.
4. Manual operation screens allow for remote control of all equipment for ease of setup and maintenance.
5. Automatically tracks the number of times each dryer has been loaded to balance use of the machines.
6. Sends a loaded shuttle to the next dryer it "thinks" will be finished, based on dry time remaining or cooldown temperature.
7. Remote display provides a copy of the automation system screen on the production manager's desktop.



Manual screens, like this one for washer controls, make it easy to control the system for test and maintenance.


The item setup screen is where conveyor indexing times, washer and dryer unload times, wash and dry formulas, and dryer unloading destination are selected.



Loads By Washer

All Washers

From: 6/1/2003 To: 6/30/2003

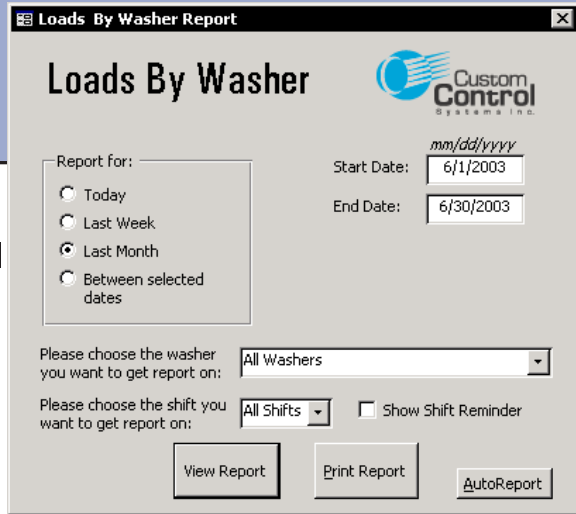


#1 85# Washer

Formula Number	Formula Name	Loads	Weight
1	Mats Reuse	1	50
2	Mats Fresh	1	85
12	Heavy Soil Small	1	55
13	Heavy Soil Large	1	85
#1 85# Washer Subtotal :		4	275

#2 550# Washer

Formula Number	Formula Name	Loads	Weight
1	Mats Reuse	6	2940
8	Shirts Small	1	110
11	Pants Large	2	737
14	Exec Shirts	1	265
17	Whites Large	1	550
30	Cotton Garments	1	312
32	Mats Logo	1	465
#2 550# Washer Subtotal :		13	5379



Washdeck production reports give you a picture of the efficiency of your plant. Additional reports show machine faults and formula run time and machine turnaround time.