



# WashComm

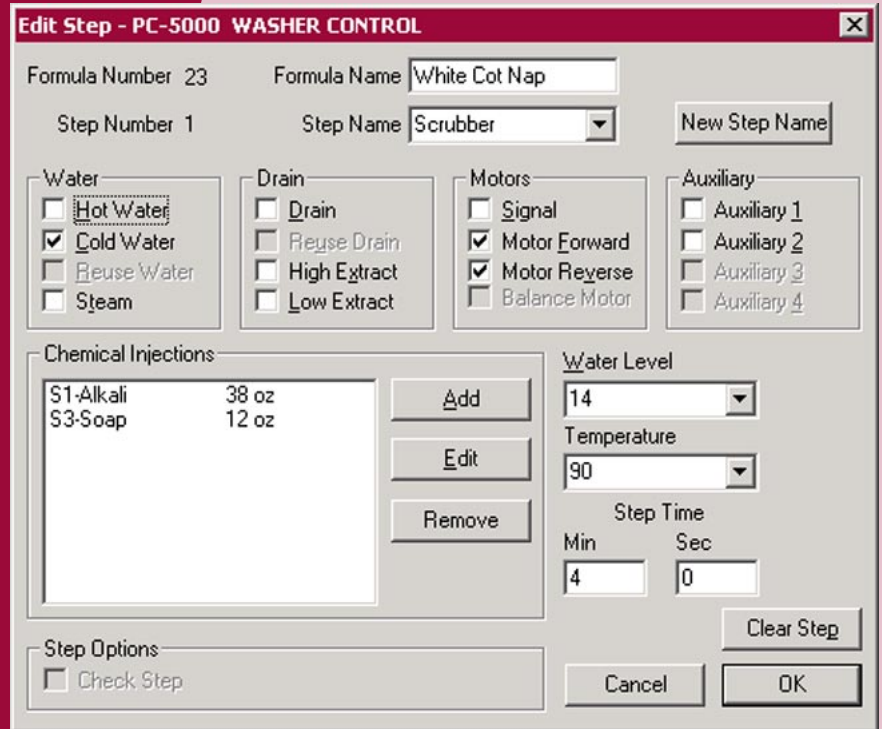
## Control Programming and Configuration Software

Historically,  
 industrial laundries  
 are labor-intensive,  
 high-stress operations.

**Custom Control**

**Systems**

has changed that.



WashComm's Step Editor gives you quick access to outputs, injections, temperatures, levels, times and custom step names.

*Whether dealing with the demands of a busy laundry or trying to manage several plants, WashComm takes the hassle out of washer setup.*

### W A S H C O M M F E A T U R E S

**WashComm allows you to:**

- Set up and edit wash formulas from any portable or desktop computer using Windows software.
- Connect the WashComm cable to a laptop and the washer; then download to program the controls.
- Store as many washers as needed in a single file.
- Create another file for washers from another plant.

**Quick Access:**

Do away with complex programming. WashComm applies easy-to-learn Microsoft Windows software to provide easy access to formulas and control settings.

**For more information:**

Custom Control Systems Inc.

2007 Beech Grove Place

Utica, New York 13501

315.732.1990

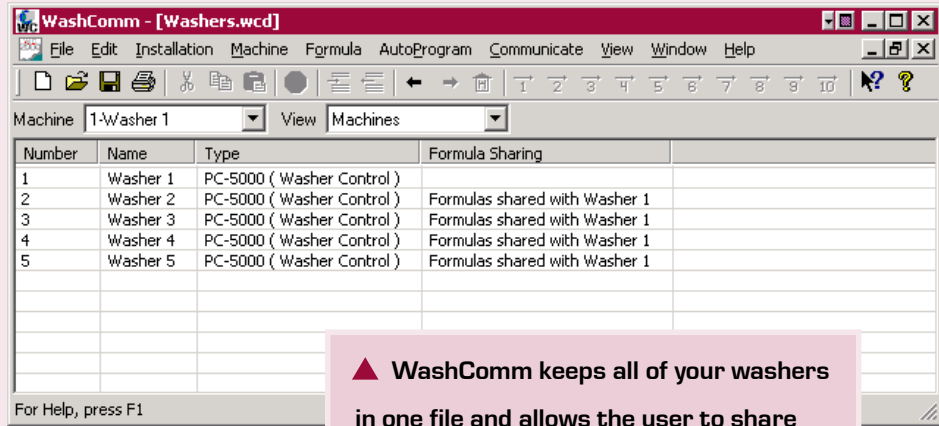
Fax 315.732.1666

www.customcontrolsystems.com

## OTHER FEATURES ...

### FORMULA EDITING

Quick, convenient and as easy as a click on outputs you want to program. Pick a step name from the list or add your own, add a chemical injection, select a temperature and level and simply click "OK." The WashComm system also allows you to copy and paste steps between formulas or between washers.



▲ WashComm keeps all of your washers in one file and allows the user to share formulas and configuration settings.

### AUTOPROGRAMMING

Instead of the repetitive, time-consuming process of entering the same sequence of wash steps over and over: Rinse Drain Rinse Drain ... WashComm allows you to create up to 10 AutoPrograms. Save your sequence of steps (Rinse Drain Rinse Drain ...) and instantly insert it into a formula.

### PRINTOUTS

Click the printer button on the toolbar to create a printout of formula and configuration information.

### FIND AND REPLACE

Changing 10-inch water levels to 12-inch water levels is a simple task with WashComm. You can also replace water temperatures easily.

### CONFIGURATION

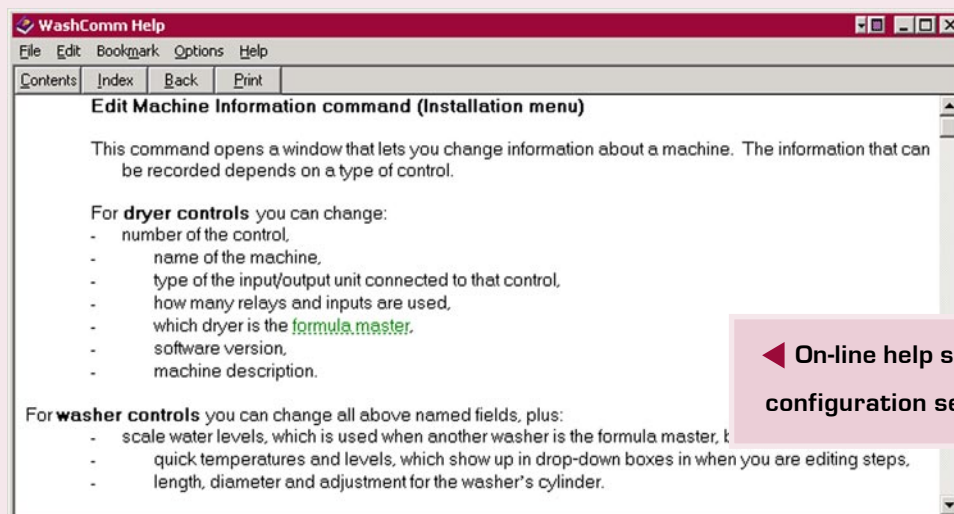
From your computer, you will be able to perform control configuration: I/O assignments, option settings, supply I/O and calibration settings, and multi-relay assignments. If configuration settings are changed, simply re-download to return to your original settings.

### ON-LINE HELP

WashComm's help file includes explanations of the PC-5500's I/O assignment settings, and guides you through some of WashComm's basic features.

### SYSTEM REQUIREMENTS

WashComm requires a 486 or newer computer that runs Windows 95, 98, ME, NT, 2000 or XP. A mouse, trackball or trackpad is recommended. Printers can be Windows-compatible laser, inkjet or dot-matrix.



◀ On-line help saves time looking up configuration settings in the manual.